

# 2025

Malaysia-Myanmar Business Chamber  
Trade Fair

# MMBCTF25



MARCH, 2025

**22**  
**SATURDAY**

- Showcase of Malaysia and Myanmar Products
- Panel Discussion
- Business Matching & Networking Opportunities
- Lucky Draw Program

09:00 AM ~ 05:00 PM

Melia` Yangon Hotel

*For More Info!*

admin@mbcmyanmar.org

09 971 988 989

09 422 754 783

**RSVP: UNTIL 15/03/2025**





# MALAYSIA-MYANMAR BUSINESS CHAMBER

We are offering sponsorship opportunities for this *Trade Fair*, which will provide enhanced visibility and benefits. The sponsorship packages are as follows:

PLATINUM SPONSORSHIP	GOLD SPONSORSHIP	SILVER SPONSORSHIP	RECYCLE BAG SPONSORSHIP
<b>Limited 1 company</b> <ul style="list-style-type: none"><li>★ Free 1 booth (6m x 6m)</li><li>★ 2 X Stands</li><li>★ Product/ Catalog in gift bag</li><li>★ Logo includes in backdrop</li><li>★ 2 times Refreshment &amp; 1 Lunch Provided (2 pax)</li><li>★ Dinner (2pax)</li></ul>	<b>Limited 5 companies</b> <ul style="list-style-type: none"><li>★ Free 1 booth (3m x 3m)</li><li>★ 1 X Stands</li><li>★ Product/ Catalog in gift bag</li><li>★ Logo includes in backdrop</li><li>★ 2 times Refreshment &amp; 1 Lunch Provided (1 pax)</li><li>★ Dinner (1 pax)</li></ul>	<b>Limited 7 companies</b> <ul style="list-style-type: none"><li>★ Free 1 booth (3m x 3m)</li><li>★ Product/ Catalog in gift bag</li><li>★ Logo includes in backdrop</li><li>★ 2 times Refreshment &amp; 1 Lunch Provided (1 pax)</li><li>★ Dinner (1 pax)</li></ul>	<b>Limited 1 company</b> <ul style="list-style-type: none"><li>★ Logo/tagline in gift bag</li><li>★ Product/ Catalog in gift bag</li><li>★ Logo includes in backdrop</li></ul>
<b>5,000,000 Ks</b>	<b>3,500,000 Ks</b>	<b>2,500,000 Ks</b>	<b>2,000,000 Ks</b>

Please submit advertising materials to [admin@mbcmyanmar.org](mailto:admin@mbcmyanmar.org)

- Logo: ai file or high resolution png (300 dpi)
- Advertisement: ai file or high resolution pdf (300 dpi)

**Dead Line : 31<sup>ST</sup> Jan, 2025**



## 3m x 3m

For non-sponsor participants, the booth charges are structured as follows:

- MMBC Members : **1,600,000 Ks**
- Non-Members (30 Nov to 15 Dec, 2024) : **1,800,000 Ks**
- Non-Members (after 15 Dec, 2024) : **2,200,000 Ks**

This investment provides you with the opportunity to showcase your products/services and connect with potential customers and partners.

- We believe that your participation in this Trade Fair will greatly contribute to its success and provide you with valuable networking and business expansion opportunities. We encourage you to reserve your booth(s) at the earliest as space is limited.
- The flyers and marketing material will be distributed by next week once finalized.
- We look forward to your participation and the opportunity to showcase your company's excellence at the Trade Fair. Let's make this event a resounding success together!



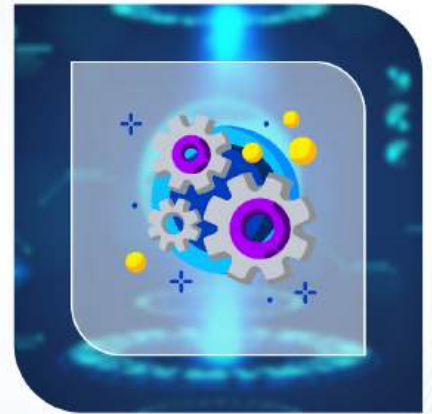
**MALAYSIA-MYANMAR  
BUSINESS CHAMBER**

# MMBCTF25

**WILL PRIMARILY FOCUS ON THESE KEY SECTORS**



**HEALTH CARE**



**TECHNOLOGY**



**GENERAL SECTOR**



**RENEWABLE ENERGY**



**EDUCATION**



# MMBCTF25

CONCEPT



## EXHIBITION BOOTHS

Showcase your products, services, and innovations to a targeted audience. Each booth will be equipped with necessary amenities to maximize your visibility and engagement.

## BUSINESS PANEL DISCUSSIONS & SEMINARS

Gain valuable insights from industry experts, thought leaders, and successful entrepreneurs through engaging discussions and informative seminars.



## NETWORKING SESSIONS

Connect with fellow participants, industry peers, and potential partners to explore collaboration opportunities and exchange ideas.





# MMBCTF25

## OBJETIVES



### PROMOTION OF TRADE

Explore new business opportunities, expand market reach, and increase visibility.

### MARKET EXPANSION

Gain insights into emerging markets and connect with potential customers and partners.



### SHOWCASING PRODUCTS & SERVICES

Present your company's offerings to a diverse audience and generate interest.





# MMBCTF25

CONCEPT



## FACILITATING PARTNERSHIPS & NETWORKING

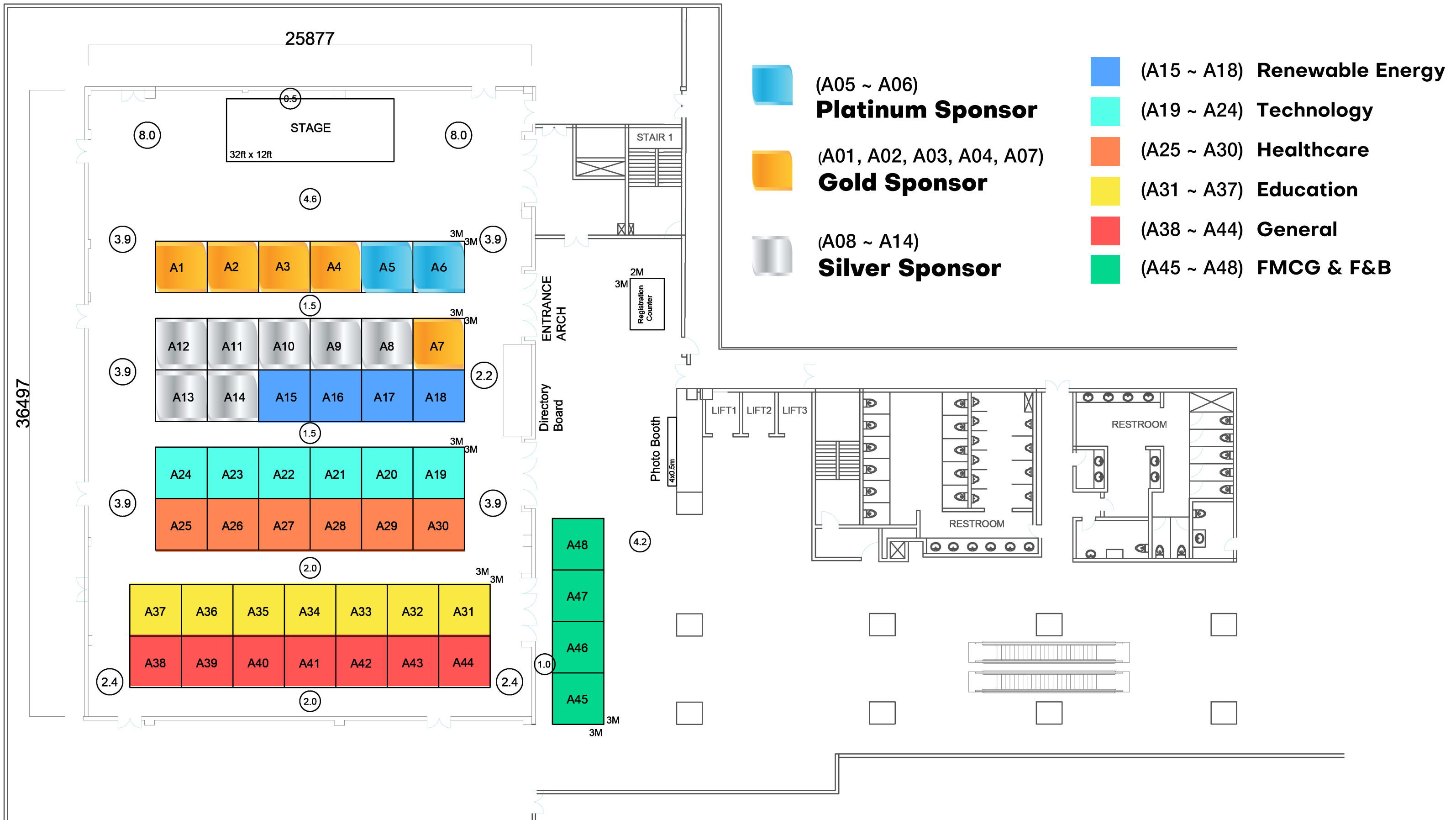
Engage with industry professionals, build strategic alliances, and establish valuable business connections.

## KNOWLEDGE SHARING

Attend insightful panel discussions, seminars, and interactive sessions to enhance your industry knowledge.



# Malaysia-Myanmar Business Chamber Trade Fair 2025





# MALAYSIA-MYANMAR BUSINESS CHAMBER

## OFFICIAL APPLICATION FORM

Event : Malaysia-Myanmar Business Chamber Trade Fair 2025  
 Venue : Melia` Yangon Hotel  
 Date : 22 March 2025 (9:00 AM - 05:00 PM)

### Exhibit or Information / Details

Company : \_\_\_\_\_  
 Address : \_\_\_\_\_  
 Designation : \_\_\_\_\_ Booth No : \_\_\_\_\_  
 Person In Charge : \_\_\_\_\_ Mobile : \_\_\_\_\_  
 Signature : \_\_\_\_\_ Email : \_\_\_\_\_

Apply as Exhibitor ( Please check the appropriate one  )

BOOTH SPEC					
	<input type="checkbox"/> <b>Standard Booth</b> • 1 unit of Reception Counter • 2 units of Folding Chair • 2 units of Fluorescent Light • 1 unit of Trash Bin • 1 unit of Needle Punch Carpe	<input type="checkbox"/> <b>Platinum Sponsorship</b> • Free 1 booth (6mx6m) • 2 X Stand • Product/Catalog in gift • Logo includes in backdrop • 2 times Refreshment & 1 Lunch Provided (2 pax) • Dinner (2pax)	<input type="checkbox"/> <b>Gold Sponsorship</b> • Free 1 booth (3mx3m) • 1 X Stand • Product/Catalog in gift • Logo includes in backdrop • 2 times Refreshment & 1 Lunch Provided (1 pax) • Dinner (1pax)	<input type="checkbox"/> <b>Silver Sponsorship</b> • Free 1 booth (3mx3m) • Product/Catalog in gift • Logo includes in backdrop • 2 times Refreshment & 1 Lunch Provided (1 pax) • Dinner (1pax)	<input type="checkbox"/> <b>Recycle Bag Sponsorship</b> • Logo/tagline in gift bag • Product/ Catalog in gift bag • Logo includes in backdrop
	<b>Attached Below!</b>	<b>5,000,000 Ks</b>	<b>3,500,000 Ks</b>	<b>2,500,000 Ks</b>	<b>2,000,000 Ks</b>

### ◆ Standard Booth Price (3m x 3m)

DATE	PRICE LIST
15 NOV, 2024	<b>1,600,000 Ks (MMBC Member Only)</b> <input type="checkbox"/>
30 Nov, 2024 - 15 Dec, 2024 (Early Bird)	<b>1,800,000 Ks (Non-Member With Discount)</b> <input type="checkbox"/>
Until 31 Jan, 2025	<b>2,200,000 Ks (Non-Member)</b> <input type="checkbox"/>